

BeamOn U3 - E

UPGRADED



- Innovative Beam Profiler (1/1.2")
- 40 Hz
- High resolution (2.35 MPixel) **16 bit** dynamic range
- USB 3.0
- Complete test station with built-in motorized Filter Wheel and full set of accessories
- Multiple active areas for multi beam analysis
- Versatile - Measures **Profile, Power and Position**

Specifications

Laser Type	CW & Pulsed
Beam Width Resolution	1 micron or better
Resolution (H x V pixels)	1900 x 1200 (Global Shutter)
Beam Size	∅75 μm - ∅6 mm
Spectral Response	350 – 1350 nm (VIS NIR), 190-1350 nm (UV)
Sensor Active Area (mm)	11.34 x 7.13, sensor can be divided into multiple active areas, working in parallel for up to 400 sectors (NEW)
Gain Control	x1 – x400
Dynamic Range	60 dB, 16 bit
Exposure	32 μsec to 2 sec
Frame Rate	40 fps (8 bit) 30 fps (16 bit) AIO (64x40) 397 fps, AOI (120x80) 240 fps, AOI (240x160) 190 fps
Pixel Size	5.86 μm x 5.86 μm
Pixel Bit Depth	16 bits

Beam width accuracy	±1.5%
Synchronization	•Software trigger
Exposure & Gain Control	Programmable via GUI
Accessories	-IR Edge Filter -SAM3-C -RDC -C-Mount Filter
Power Requirements	~2 Watt (Via USB 3.0 interface)
Housing Size (L x W x H) in mm	64 x 46 x 73.5
Weight (typical)	300 gr.
Min. Hardware Requirements	CPU i5 1.6 GHz, 4 GB RAM
Interface	USB 3.0, windows 8/10/11 (32 & 64 bit)
Mechanical Interface	Post mounting: 2 concentric opposite 8-32 UNC 6 mm depth at the detector plane Optical attachments & filters: C-mount
Built-in Automatic filter wheel	With mounted filters: ND8, ND200, ND1000, one unpopulated. (UV Version comes with additional UV Bandpass Filter at position #1)

Wavelength	633	980	1310
Saturation	20 μW/mm ²	100 μW/mm ²	0.2 W/mm ²
Sensitivity	Better than 1 nanoW/mm ²	Better than 1 nanoW/mm ²	200 μW/mm ²

Ordering Information

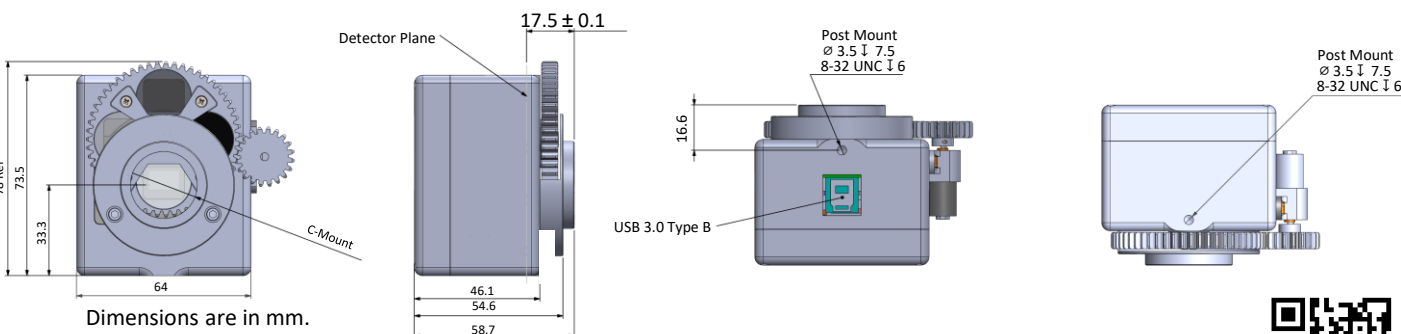
BeamOn U3-E: A camera for 350 – 1350 nm with motorized built-in filter wheel, USB3.0 cable 1.8 meters long, application software on CD/Flash Disk, mounting post, 35 mm hood for ambient light obstruction, carrying case.

SAM3-C: Attachment for high power lasers attenuation (up to 20 W)

RDC: Attachment for beam reducer (ratio 2x1)

BeamOn U3-E-UV: A camera for 190 – 1350 nm with motorized built-in filter wheel, USB3.0 cable 1.8 meters long, application software on CD/Flash Disk, mounting post, 35 mm hood for ambient light obstruction, carrying case, additional UV filter at position #1.

IR-Edge Filter: C-mount filter for IR Edge.



DUMA OPTRONICS LTD.



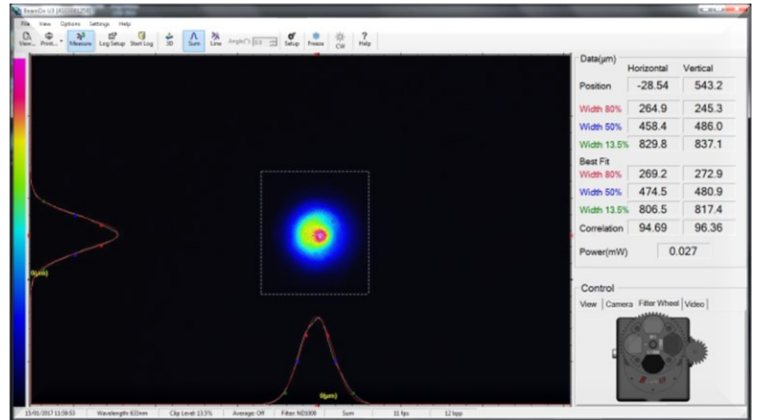
Website: <http://www.dumaoptronics.com>

E-mail: sales@duma.co.il

July 2023

BeamOn U3 - E

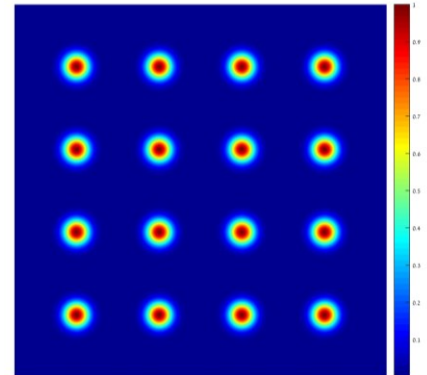
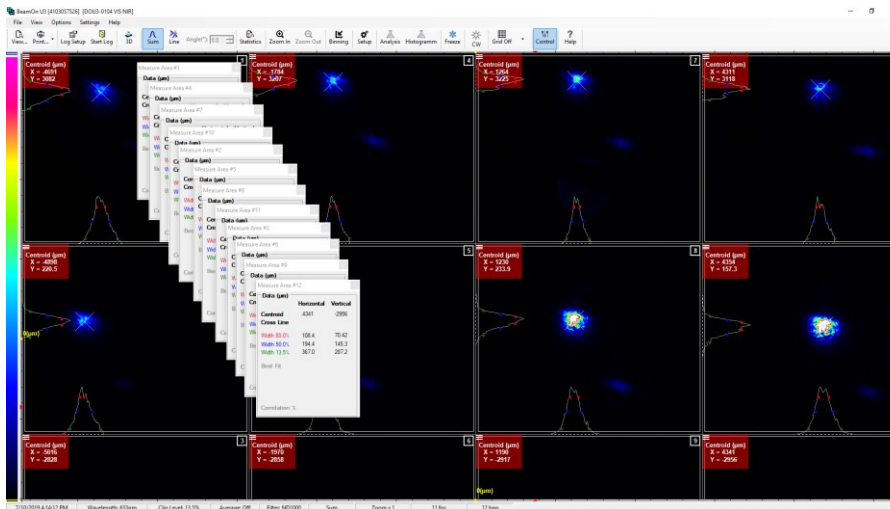
UPGRADED



- Real-Time Calculation & Display of Beam Profile, Beam Size, Gaussian Fit and Top Head
- TCP/IP, DLL Communication Protocols
- PASS/FAIL Testing

Multi-Beam Analysis

Up to 400 Independent Beams Analysis



- Simultaneous independent beam profiles
- Interposition of each beam's center of energy
- Detailed test report in a table format

DUMA OPTRONICS LTD.

